

A19 5.0W LED FILAMENT

SPECIFICATIONS & TECHNICAL DATA

The 120V EmeryAllen A19 retrofit lamp is an energy efficient alternative to incandescent E26 base lamps. It offers similar light output to a 120V, 60W incandescent (500lm) and is suitable for use in most 120V E26 fixtures.

| | |
|---------------------------|-------------------|
| Base Type | E26 |
| Material | Glass + Aluminum |
| Input Voltage | 100-130V AC |
| Wattage | 5.0 |
| Volt-Amperes (VA) | 6.39 |
| CRI | 92.9 |
| Brightness | 500 lumens |
| Lumens/Watt | 100 |
| Color Temperature | 2700K & 3000K |
| R9 | 55 |
| Halogen Equivalent | 60W |
| Beam Angle | 360 degrees |
| Life | 15,000 hours |
| Warranty | Limited Lifetime* |

Available Models:

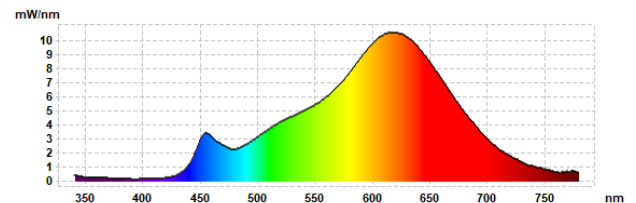
- EA-A19-5.0W-E26-2790-D (2700K)
- EA-A19-5.0W-E26-3090-D (3000K)

Dimming:

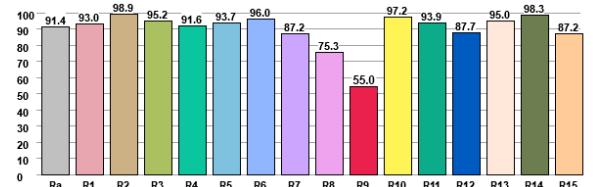
Dimmable with most incandescent and LED dimmers.



SPECTRAL DISTRIBUTION



CRI VALUES R1-R15



TM30 VECTOR

